

## Water-Cooled Semi-Automatic MIG Torches

For Models  
**607GW/PG**



**INSTALLATION, OPERATIONS AND REPLACEMENT PARTS MANUAL**

## **TABLE OF CONTENTS**

INTRODUCTION/WARRANTY .....	1
GENERAL SAFETY.....	2
TORCH SPECIFICATIONS.....	2
NOZZLE/TIP RELATIONSHIPS .....	3
INSTALLATION .....	3
LINER REPLACEMENT .....	4
GOOSENECK REPLACEMENT .....	5
TRIGGER SWITCH REPLACEMENT.....	5
UNICABLE REPLACEMENT .....	5
DAILY MAINTENANCE .....	6
OPTIONS.....	6
PARTS BREAKDOWN .....	7-8

## **INTRODUCTION**

Thank you for purchasing an American Weldquip product. The American Weldquip product you have purchased has been carefully manufactured, assembled, and fully tested. This manual contains information on the installation, operation, maintenance, and replacement part breakdown. Please read, understand, and follow all safety instructions, warnings and procedures. Keep this manual handy for referencing installation, operation, maintenance, and part ordering information. While every precaution has been taken as to the accuracy in this manual, American Weldquip, Inc. assumes no responsibility for errors or omissions. American Weldquip, Inc. assumes no liability for damages resulting from the use of the information contained in this manual. American Weldquip, Inc. shall have no liability to the buyer for consequential damages or expenses by any defect whatsoever.

## **WARRANTY**

AMERICAN WELDQUIP MIG guns and parts are warranted to be free of defects in material and/or workmanship for the period of time listed below. For any product found to be defective under normal use, AMERICAN WELDQUIP, INC. at our option, will repair, replace or issue a credit for the value of the defective product. All warranty claims must be submitted by the original purchaser. Use of non-genuine AMERICAN WELDQUIP parts and/or consumables may damage and/or severely limit the performance of the equipment which may limit or void any warranties. AMERICAN WELDQUIP, INC. will not assume responsibility for incidental damages or expenses related to any defect. This warranty does not cover damage caused by misuse or abuse, accident, alteration of product, improper installation, misapplication, lack of reasonable care and maintenance, unauthorized repairs or modifications, loss of use while at a repair facility or other conditions that are beyond the control of American Weldquip, Inc.

A Return Authorization Number (RA#) must be attained from the factory for any product being returned for Warranty Repair or Replacement. All returned product must be shipped freight prepaid by the sender. No- charge replacements, repaired products, or credit will be issued, once the returned product has been evaluated and warranty condition has been verified. If an immediate replacement is required before proper warranty evaluation, a purchase order number is required and the goods will be invoiced. A credit will be issued once it is determined that a warranty condition exists.

### **STANDARD WARRANTY**

All Semi-Automatic, Automatic, Robotic MIG TORCHES and Components	= 120 Days
MIG Torch Trigger Switches (Contacts only) -Excludes Smoke Extraction	= LIFETIME
Robotic Nozzle Cleaning Stations, Wire Cutter	= 90 Days
Robotic Peripherals, ArcSafe, Gun Mounts	= 90 Days
TIG POINT Tungsten Electrode Grinders	= 90 Days

### **LIMITED EXTENDED WARRANTY PROTECTION**

This limited extended warranty protection expands coverage to loyal customers who use all GENUINE American Weldquip consumables. Customers filing a claim under the extended warranty will need to prove, by providing past invoices, that they have been purchasing and using Genuine American Weldquip consumables.

All Semi-Automatic, Automatic, Robotic MIG TORCHES and Components	= 1 YEAR
MIG Torch Trigger Switches (Contacts only) -Excludes Smoke Extraction	= LIFETIME
MIG Torch Handles	= LIFETIME
Robotic Nozzle Cleaning Stations, Wire Cutter	= 90 Days
Robotic Peripherals, ArcSafe, Gun Mounts	= 90 Days
TIG POINT Tungsten Electrode Grinders	= 90 Days

## **ROHS COMPLIANT**

RoHS (Restriction of Hazardous Substances) is an environmental law which addresses the European Union directive 2002/95/EC known as the RoHS Directive. The RoHS directive restricts the use of hazardous substances listed below in electrical and electronic equipment. While it is not a requirement to meet the directive in the United States, at this time, American Weldquip Inc. feels this is an important part of our "Go Green initiative. We have taken all reasonable steps to try to insure the supporting evidence regarding the absence of the restricted substances to support RoHS compliance.

For reference, the maximum concentration values of the restricted substances by weight in homogenous materials are:

Lead/Lead Components	- 0.1%
Mercury	- 0.1%
Hexavalent Chromium	- 0.1%
Polybrominated Biphenyls (PBBs)	- 0.1%
Polybrominated Diphenyl Ethers (PBDEs)	- 0.1%
Cadmium	-0.01%

For RoHS Certification of Compliance Letter on a particular product please visit our website – [www.weldquip.com](http://www.weldquip.com) or email us at [technical@weldquip.com](mailto:technical@weldquip.com) or call 330-239-0317.



## **GENERAL SAFETY PRECAUTIONS**

Before installing, operating or performing maintenance please read the safety precautions below. Failure to observe safety precautions can result in injury or death.

**WARNING** – A welding arc emits ultraviolet (UV) and other radiation and can cause serious injury to unprotected skin and eyes.

**WARNING** – Hot metal produced by welding can cause severe burns. Heat from arcs and hot weld spatter and sparks can start fires and cause explosions of flammable gases.

**WARNING** – Fumes and gases generated from welding can cause severe injury to respiratory system and even death. **DO NOT** weld in confined spaces and make sure there is plenty of ventilation. Do not breathe fumes and gases as can cause asphyxiation.

**WARNING** – Electrical shock can kill. Do not touch live electrical parts and/or use in damp locations.

1. Always wear a welding helmet with the correct filter and cover plate.
2. Always wear safety Glasses with side shields in any work area even if a welding helmet is also required.
3. All exposed skin should be covered with flameproof protective clothing. This includes leather gloves, heavy long sleeve shirt, cuff less pants and high topped shoes. **DO NOT WEAR CLOTHING MADE FROM FLAMMABLE SYNTHETIC FIBERS.**
4. Protective screens or barriers should be used to protect others from spatter, flash and glare while welding.
5. Make sure work area is free of all combustible materials or cover with a protective non-flammable cover.
6. Remove all flammable gas cylinders as welding sparks can cause explosion in the event of a leak. Take serious precautions if welding in area of flammable gas lines and/or tanks.
7. Know where a fire extinguisher is at all times. The best practice is to have an extinguisher, water pail, fire hose and/or sand bucket available for immediate use.
8. Poorly maintained equipment can cause injury or death
9. Inspect, repair or replace worn or damaged welding cables and torch leads.
10. Insure equipment is properly grounded and installed according to code.
11. Never wrap the weld cable or torch leads around your body.
12. Make sure equipment is turned off when not in use.

### **ADDITIONAL SOURCES FOR SAFETY INFORMATION**

ANSI Standard Z49.1 CODE FOR SAFETY IN WELDING AND CUTTING - American National Standards Institute, 1430 Broadway, New York, NY 10018

NFPA Standard 51B, "Fire Prevention in the Use of Cutting and Welding Processes – National Fire Protection Association, Batterymarch Park, Quincy, MA 02269

CSA Standard W117.2 CODE FOR SAFETY IN WELDING AND CUTTING - Canadian Standards Association, Standards Sales, 178 Rexdale Boulevard, Rexdale, Ontario, Canada M9W 1R3.

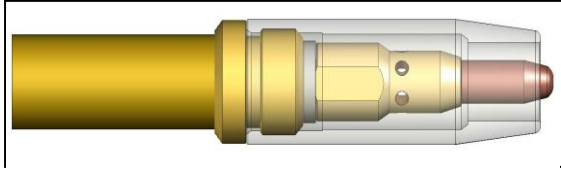
## **TORCH SPECIFICATIONS**

MODEL	AMPERAGE	100% Duty Cycle		60% Duty Cycle	
		CO2	Mixed Gas	CO2	Mixed Gas
607GW/PG	600	600A	500A	625A	600A

Duty Cycle is based on a complete cycle time of 10 minutes. (60% Duty Cycle = 6 minutes weld time, 4 minutes off time).

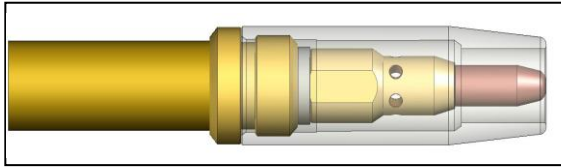
## **NOZZLE/TIP RELATIONSHIPS**

Shown below are typical relationship between the contact tip and nozzle in GMAW Semi-Automatic applications. Nozzles to tip relationships are usually dictated by the process and application but not necessarily the standard. Keep in mind that decreased tip life, increased spatter cleaning cycles may be required if the tip relationship is changed to achieve other objectives.



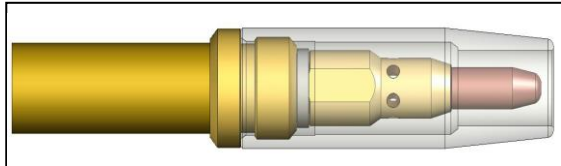
#### **Extended Tip – Short Circuit (Short Arc, Dip Transfer) Welding Applications**

The tip stick out is usually 1/8" or 1/4" from the nozzle. Keep in mind that the further the stick out the more susceptible to gas porosity issues. Typically is used in short circuit, lower amperage applications, and/or where you may need to reach in to a corner.



#### **Flush Tip – Higher current Short Circuit (Short Arc, Dip Transfer) Welding Applications**

The tip is flush with the end of the nozzle. Typically used in higher current and voltage short circuit applications.



#### **Recessed Tip – Spray Arc, Pulsed, Flux Core Welding Applications**

The tip is usually recessed in the nozzle 1/8" or 1/4". Usually, the higher the heat and/or current the further the recess. However, this is also dependant on the wire used and the arc length requirement.

## **INSTALLATION**

Depending on how your torch was ordered your American Weldquip torch has been supplied with either a EURO type feeder connection or a DIRECT wire feeder connection. The American Weldquip torch can be installed to the wire feed unit in two ways.

- Euro Connection – Feeder Adaptor Kit may be required
- Direct Connection

### **Direct Connect**

The direct connect torch system is designed for installation to the wire feeder without the need for any adaptor system. The torch is supplied (depending on the torch configuration ordered) with a feeder connection plug at the rear of the torch, gas connection, feeder control cable.

- 1) Fully insert the torch Direct Connection into wire feeder. Tighten screw or other method on wire feeder to secure torch
- 2) Connect the gas hose to barbed fitting on the direct connect pin if required.
- 3) Connect feeder control cable/plug to torch.
- 4) Connect feeder control cable/plug to the feeder.
- 5) Feed welding wire into the torch and tighten drive rolls.

**WARNING: WHEN FEEDING WELD WIRE THROUGH THE TORCH KEEP THE FRONT END OF THE TORCH POINTED AWAY FROM ANY PERSON OR OBJECT. DO NOT POINT AT FACE, HANDS ETC. FAILURE TO DO SO WILL RESULT IN BODILY INJURY AND POSSIBLY DEATH.**

### **Using Feeder Adaptor Kit**

In some cases it may be desirable to use a feeder adaptor kit such as when using different manufactures wire feed units to commonize on a torch configuration.

- 1) Thread feeder adaptor plug into the adaptor block and tighten.
- 2) Insert the adaptor guide tube into the adaptor plug.
- 3) Fully insert the feeder adaptor assembly into the wire feeder. Tighten screw or other method on wire feeder to secure the adaptor assembly.
- 4) If required, connect the feeder control cable/plug to the wiring on the adaptor assembly.
- 5) Connect feeder control cable/plug to the feeder.

- 6) Connect the torch to the feeder adaptor assembly.
- 7) Feed welding wire into the torch and tighten drive rolls.

**WARNING: WHEN FEEDING WELD WIRE THROUGH THE TORCH KEEP THE FRONT END OF THE TORCH POINTED AWAY FROM ANY PERSON OR OBJECT. DO NOT POINT AT FACE, HANDS ETC. FAILURE TO DO SO WILL RESULT IN BODILY INJURY AND POSSIBLY DEATH.**

## **MAINTENANCE**

### ***Liner Replacement***

The standard liner requires the torch be removed from the feeder in order to be changed.

#### **Standard Liner Maintenance**

**Warnings – To avoid accidental injury ensure power supply and wire feed unit is turned off.**

- 1) Trim the end of the weld wire at contact tip.
- 2) Retract or completely remove weld wire so torch can be removed from the wire feeder.
- 3) Remove the nozzle, contact tip and diffuser.
- 4) Loosen the set screw at the torch feeder connection using a 5/64" Allen wrench.
- 5) Making sure the torch cable is straight, grasp the liner at the rear of the torch with a pair of pliers and remove.
- 6) Carefully feed the new liner into the torch using short strokes to avoid kinking. You may need to twist the liner for easier insertion.
- 7) Tighten the set screw to secure the liner in the torch.
- 8) Reinstall the torch to the wire feed unit.
- 9) **IMPORTANT:** at the front end of the torch push the liner back into the gun and hold in place.
- 10) Trim the liner to 3/4" stick out from the end of the gooseneck.
- 11) Replace the Diffuser, contact tip and nozzle.
- 12) Feed welding wire into the torch and tighten drive rolls.

**WARNING: WHEN FEEDING WELD WIRE THROUGH THE TORCH KEEP THE FRONT END OF THE TORCH POINTED AWAY FROM ANY PERSON OR OBJECT. DO NOT POINT AT FACE, HANDS ETC. FAILURE TO DO SO WILL RESULT IN BODILY INJURY AND POSSIBLY DEATH.**

## Gooseneck Replacement

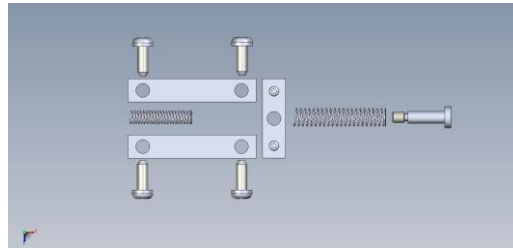
- 1) Secure Gooseneck in a vice.
- 2) Remove the liner from the torch.
- 3) Remove the four handle screws and separate the handle assembly.
- 4) Unthread the power cable from the gooseneck.
- 5) Cut off the clamps from the water line and conduit and pull off of neck assembly. You may have to slit with knife. Note: Cut off as little as possible from these two lines.
- 6) Slide new clamps on the water line and conduit.
- 7) Thread the power cable on the gooseneck and tighten.
- 8) Push the water line and conduit on the gooseneck assembly and crimp the clamps.
- 9) Install the bottom handle assembly (trigger side) onto the gooseneck/cable assembly. The trigger wires will fit in the grooves on the sides of the body insulator. Make sure the trigger wires stay seating in the body insulator and the insulator is fully inserted into the bottom handle.
- 10) Slide the handle spring or cable support up and insert in the rear of the handle.
- 11) Install the top handle and secure with the (4) screws. **IMPORTANT:** Insure the trigger wires are not pinched between the handle.
- 12) Reinstall the diffuser, contact tip and nozzle.

## Trigger Switch Replacement

### CA/GW SERIES TORCHES

The new Trigger Switch Assembly contains –

- 1ea. Trigger Paddle
- 2ea. Springs
- 4ea. Screws – for 2 outer contacts.
- 1ea. Shoulder Screw
- 2ea. Copper Outer Contact Plates
- 1ea. Copper Contact Plate



- 1) Secure Gooseneck in a vice.
- 2) Remove the four handle screws and separate the handle assembly.
- 3) Remove the trigger paddle shoulder screw and spring securing the center copper blade to the trigger paddle. If using the extended trigger there are two screws that secure the trigger paddle and must be removed.
- 4) Remove the (4) screws securing the copper contact assemblies and remove the trigger leads and contacts.
- 5) Using a screwdriver gently push, from the inside of the handle, the trigger paddle where it attaches to the handle and remove the trigger paddle and return spring.
- 6) Insert the return spring (the smaller diameter spring) into the seat on the bottom handle assembly.
- 7) Carefully insert the new trigger paddle into the handle assembly and tap the paddle in on the pivot point in the handle. The Trigger should snap in place.
- 8) Place the copper cross contact on the shoulder screw, then install the remaining spring over the screw, and thread into the trigger paddle until tight. **DO NOT OVER TIGHTEN.**
- 9) Using the (4) four screw provided attach the (2) two outer contact plates and install the (2) two trigger leads under the front contact plate screws.
- 10) Install the bottom handle assembly (trigger side) onto the gooseneck/cable assembly. The trigger wires will fit in the grooves on the sides of the body insulator. Make sure the trigger wires stay seating in the body insulator and the insulator is fully inserted into the bottom handle.
- 11) Slide the handle spring or cable support up and insert in the rear of the handle.
- 12) Install the top handle and secure with the (4) four screws provided. **IMPORTANT:** Insure the trigger wires are not pinched between the handle.

### PG – PISTOL GRIP SERIES TORCHES

- 1) Secure Gooseneck in a vice.
- 2) Remove the six (6) handle screws and separate the handle assembly.
- 3) Remove the trigger from the handle half and remove the trigger wires.
- 4) Reinstall the trigger wires on the new switch assembly.
- 5) Reinstall the trigger assembly inside the handle half.
- 6) Install the top handle half to the bottom handle half. **IMPORTANT:** Insure the trigger wires are not pinched between the handle.
- 7) Reinstall the six (6) handle screws and tighten.

## Cable Assembly Replacement

- 1) Secure Gooseneck in a vice.
- 2) Remove the liner from the torch.
- 3) Remove the four front handle screws and separate the handle assembly.
- 4) Unthread the power cable from the gooseneck.
- 5) Cut off the clamps from the water line and conduit and pull off neck assembly. You may have to slit with knife.
- 6) Slide new clamps on the water line and conduit of the new cable assembly.
- 7) Thread the power cable to the gooseneck and tighten.
- 8) Push the water line and conduit on the gooseneck assembly and crimp the clamps.
- 9) Install two open end terminals to the trigger wire assembly and attached to the screws on the trigger assembly in the bottom handle.
- 10) Install the bottom handle assembly (trigger side) onto the gooseneck/cable assembly. The trigger wires will fit in the grooves on the sides of the body insulator. Make sure the trigger wires stay seating in the body insulator and the insulator is fully inserted into the bottom handle.
- 11) Slide the handle spring or cable support up and insert in the rear of the handle.
- 12) Install the top handle and secure with the (4) screws. **IMPORTANT:** Insure the trigger wires are not pinched between the handle.
- 13) Reinstall the diffuser, contact tip and nozzle.
- 14) On the rear of the old cable assembly turn and remove the spring guard hand nut and rear support spring and slide back on the cable assembly.
- 15) Remove the screw securing the handle to the feeder pin adaptor and separate the handle.
- 16) Unthread the power cable from the feeder adaptor block.
- 17) Cut off the clamps from the short red water line ( do not discard as reusable) and conduit and pull off. You may have to slit with knife.
- 18) Slide the threaded rear handle support nut and rear support spring onto the new cable assembly.
- 19) Slide new clamps on the short red water line and conduit of the new cable assembly.
- 20) Thread the power cable to the feeder pin adaptor and tighten.
- 21) Push the red water line and conduit on the feeder pin adaptor and crimp the clamps.
- 22) Install the trigger wire using (2) butt splices.
- 23) Install the bottom handle assembly onto the feeder adaptor assembly.
- 24) Carefully route the red and blue water lines and the trigger lead thru the opening in the handle half. Make sure the water lines and trigger wires are not pinched between the handle halves.
- 25) Install the other handle half and screw the rear handle support nut and spring on the rear handle assembly.
- 26) Install the screw on the rear handle and feeder adaptor.
- 27) Reinstall the liner.

## DAILY MAINTENANCE

A few minutes per day performing a quick check of your mig torch will help to decrease weld problems, minimize downtime, and help increase consumable life.

### At Beginning of Shift

- Inspect the cable for cuts, nicks or tears. If you can see bare copper return for maintenance.
- Inspect the front end consumables. Clean weld spatter and inspect the nozzle insulator. If nozzle insulation is damaged is should be replaced.
- Check that the gas diffuser is tight on the gooseneck.
- Check the gas holes on the diffuser and clean if necessary.
- Check and tighten the contact tip.
- Check all electrical connections including the power cable from the power supply, torch/feeder connections, and control cables for loose connections. Tighten if necessary. Loose connections can cause overheating of cables and/or loss of electrical power.

## OPTIONS

<u>Part Number</u>	<u>Description</u>
75000009	Gun Hanger
75000007-ET	Extended Trigger – Includes bottom Handle Half
75000030	Heat Shield



## NOZZLE DETAIL SHEET

### 300 SERIES NOZZLES

PART #	DESCRIPTION	TYPE	BORE SIZE	MATERIAL	BORE ID DIMENSION	O.A.L.	INSULATOR REQUIRED
75133801	NOZZLE - CONICAL	A	3/8" (9.5mm)	NI PLATED BRASS	.375" (9.5mm)	2.820" (71.6mm)	NONE REQ.
75133802	NOZZLE - BOTTLE NOSE	C	3/8" (9.5mm)	NI PLATED BRASS	.375" (9.5mm)	2.820" (71.6mm)	NONE REQ.
75135601-I	NOZZLE - CONICAL	A	9/16" (14.2mm)	NI PLATED BRASS	.593" (15.1mm)	2.820" (71.6mm)	INSTALLED
75135002-I	NOZZLE - TAPERED	B	1/2" (12.7mm)	NI PLATED BRASS	.500" (12.7mm)	2.820" (71.6mm)	INSTALLED
75135003-I	NOZZLE - TAPERED	C	1/2" (12.7mm)	NI PLATED BRASS	.500" (12.7mm)	2.672" (67.96mm)	INSTALLED
75135602-I	NOZZLE - CONICAL	A	9/16" (14.2mm)	NI PLATED BRASS	.593" (15.1mm)	2.545" (64.6mm)	INSTALLED
75135004	NOZZLE - CONICAL SHORT	G	1/2" (12.7mm)	NI PLATED BRASS	.500" (12.7mm)	1.937" (49.2mm)	NONE REQ.

### 400 SERIES/500 SERIES NOZZLES

PART #	DESCRIPTION	TYPE	BORE SIZE	MATERIAL	BORE ID DIMENSION	O.A.L.	INSULATOR REQUIRED
75146201-I	NOZZLE - BOTTLE NOSE	E	5/8" (15.9mm)	NI PLATED BRASS	.625" (15.9mm)	3.125" (79.4mm)	INSTALLED
75145001	NOZZLE - BOTTLE NOSE	C	1/2" (12.7mm)	NI PLATED BRASS	.500" (12.7mm)	3.031" (77.0mm)	75001733
75146202	NOZZLE - CONICAL	A	5/8" (15.9mm)	NI PLATED BRASS	.625" (15.9mm)	3.125" (79.4mm)	75001738
75146202C	NOZZLE - CONICAL	A	5/8" (15.9mm)	NI PLATED COPPER	.625" (15.9mm)	3.125" (79.4mm)	75001738
75146202CU	NOZZLE - CONICAL	A	5/8" (15.9mm)	BARE COPPER	.625" (15.9mm)	3.125" (79.4mm)	75001738
75145601-I	NOZZLE - TAPERED	B	9/16" (14.2mm)	NI PLATED BRASS	.563" (14.2mm)	3.125" (79.4mm)	INSTALLED
75145002C	NOZZLE - TAPERED	B	1/2" (12.7mm)	NI PLATED COPPER	.531" (13.5mm)	3.125" (79.4mm)	75001738
75145002CU	NOZZLE - TAPERED	B	1/2" (12.7mm)	BARE COPPER	.531" (13.5mm)	3.125" (79.4mm)	75001738
75145003	NOZZLE - TAPERED (LONG)	B	1/2" (12.7mm)	NI PLATED BRASS	.500" (12.7mm)	3.915" (99.4mm)	NONE REQ.
75146501S	NOZZLE - SPOT	H	5/8" (15.9mm)	NI PLATED BRASS	.656" (16.7mm)	3.437" (87.3mm)	75001738
75146204-I	NOZZLE - CONICAL	A	5/8" (15.9mm)	NI PLATED BRASS	.625" (15.9mm)	2.820" (71.6mm)	INSTALLED
75146204CU	NOZZLE - CONICAL	A	5/8" (15.9mm)	BARE COPPER	.625" (15.9mm)	2.820" (71.6mm)	75001738
75145602-I	NOZZLE - SMALL CONICAL	D	9/16" (14.2mm)	NI PLATED BRASS	.593" (15.1mm)	2.820" (71.6mm)	INSTALLED
75144301-I	NOZZLE - TAPERED	D	7/16" (11.1mm)	NI PLATED BRASS	.438" (11.1mm)	2.820" (71.6mm)	INSTALLED
75145004	NOZZLE - BOTTLE NOSE	C	1/2" (12.7mm)	NI PLATED BRASS	.500" (12.7mm)	3.125" (79.4mm)	75001733
75146205-I	NOZZLE - CONICAL	A	5/8" (15.9mm)	NI PLATED BRASS	.625" (15.9mm)	3.031" (77.0mm)	INSTALLED
75146205CU	NOZZLE - TAPERED	B	5/8" (15.9mm)	BARE COPPER	.625" (15.9mm)	3.031" (77.0mm)	75001738
75146206-I	NOZZLE - SHORT CONICAL	G	5/8" (15.9mm)	NI PLATED BRASS	.625" (15.9mm)	1.875" (47.6mm)	INSTALLED
75146207-I	NOZZLE - SHORT CONICAL	G	5/8" (15.9mm)	NI PLATED BRASS	.625" (15.9mm)	2.187" (55.6mm)	INSTALLED
75147501	NOZZLE - CYLINDRICAL	F	3/4" (19.0mm)	NI PLATED BRASS	.703" (17.9mm)	3.125" (79.4mm)	75001738
75147501CU	NOZZLE - CYLINDRICAL	F	3/4" (19.0mm)	BARE COPPER	.703" (17.9mm)	3.125" (79.4mm)	75001738
75145603-I	NOZZLE - SHORT TAPERED	G	9/16" (14.2mm)	NI PLATED BRASS	.563" (14.2mm)	2.375" (60.3mm)	INSTALLED
75145005	NOZZLE - BOTTLE NOSE	C	1/2" (12.7mm)	NI PLATED BRASS	.500" (12.7mm)	2.820" (71.6mm)	75001733
75144302-I	NOZZLE - TAPERED	D	7/16" (11.1mm)	NI PLATED BRASS	.438" (11.1mm)	3.125" (79.4mm)	INSTALLED

## CONTACT TIP SELECTION CHART

### M6 CONTACT TIPS

<u>PART #</u>	<u>WIRE SIZE</u>	<u>NOMINAL I.D.</u>	<u>DESCRIPTION</u>
<b><u>COPPER (CU)</u></b>			
75023511	.023" (.6mm)	.034"	CONTACT TIP (STANDARD)
75030511	.030" (.8mm)	.038"	CONTACT TIP (STANDARD)
75035511	.035" (.9mm)	.044"	CONTACT TIP (STANDARD)
75035512	.040" (1mm)	.048"	CONTACT TIP (STANDARD)
75045511	.045" (3/64") (1.2mm)	.053"	CONTACT TIP (STANDARD)
75045512	.045" (3/64") (1.2mm)	.059"	CONTACT TIP (STANDARD)

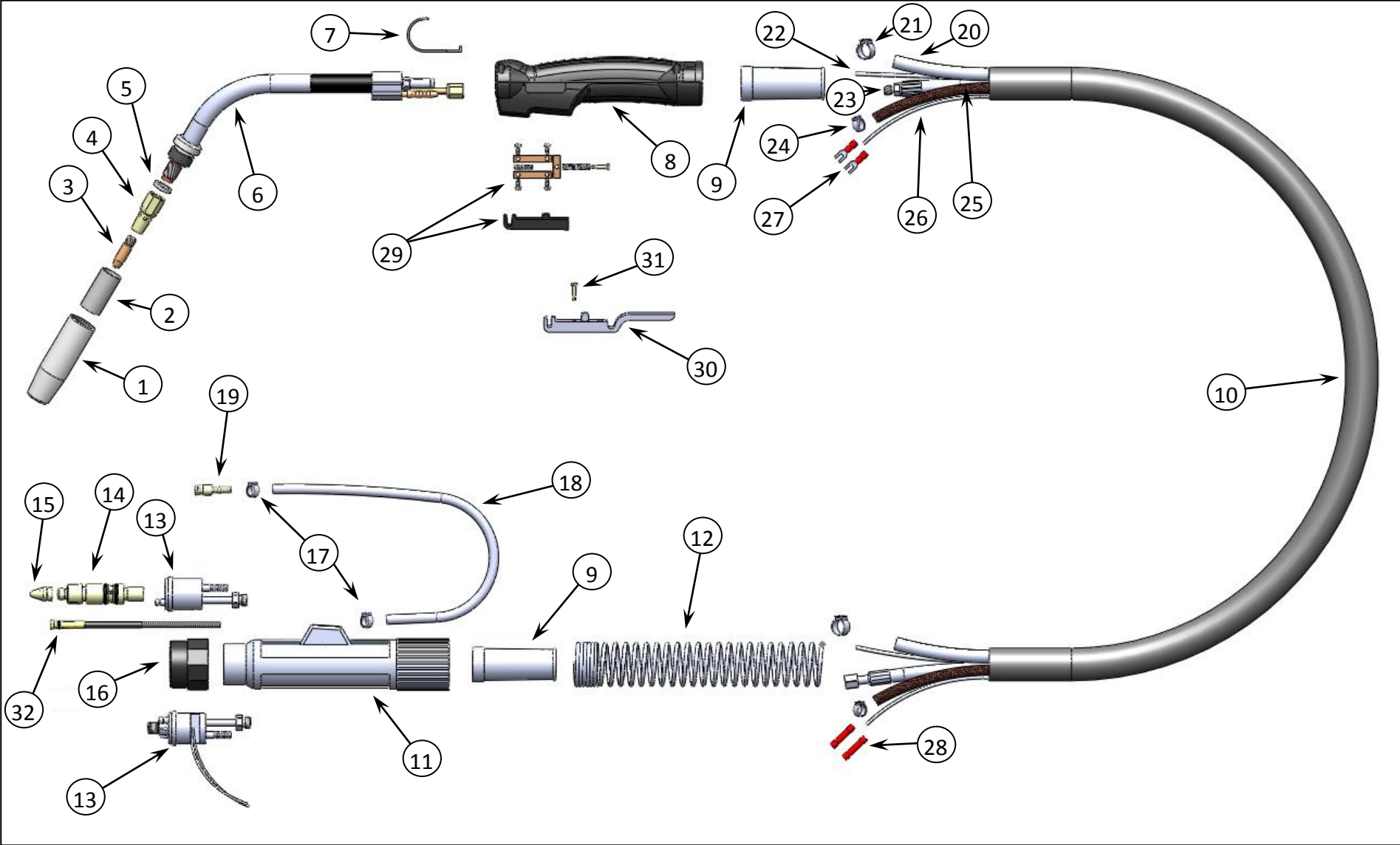
### M8 CONTACT TIPS

<u>PART #</u>	<u>WIRE SIZE</u>	<u>NOMINAL I.D.</u>	<u>DESCRIPTION</u>
<b><u>COPPER (CU)</u></b>			
75030014	.030" (.8mm)	.038"	CONTACT TIP (STANDARD)
75035014	.035" (.9mm)	.044"	CONTACT TIP (STANDARD)
75040014	.040" (1.0mm)	.048"	CONTACT TIP (STANDARD)
75045014	.045" (3/64") (1.2mm)	.054"	CONTACT TIP (STANDARD)
75052014	.052" (1.3mm)	.061"	CONTACT TIP (STANDARD)
75062014	.062" (1/16") (1.6mm)	.073"	CONTACT TIP (STANDARD)
75062015	.062" (1/16") (1.6mm)	.076"	CONTACT TIP (STANDARD)
75078014	.078" (5/64") (2.0 mm)	.087"	CONTACT TIP (STANDARD)
75093014	.093" (3/32") (2.4mm)	.106"	CONTACT TIP (STANDARD)

### M8 HRT – EXTENDED LIFE CONTACT TIPS

<u>PART #</u>	<u>WIRE SIZE</u>	<u>NOMINAL I.D.</u>	<u>DESCRIPTION</u>
20040400	.040" (1.0mm)	.050"	.315 OD CONTACT TIP
20045400	.045" (3/64") (1.2mm)	.054"	.315 OD CONTACT TIP
20035500	.035" (.9mm)	.044"	.395 OD CONTACT TIP
20040500	.040" (1.0mm)	.050"	.395 OD CONTACT TIP
20045500	.045" (3/64") (1.2mm)	.054"	.395 OD CONTACT TIP
20052500	.052" (1.3mm)	.061"	.395 OD CONTACT TIP
20062500	.062" (1/16") (1.6mm)	.073"	.395 OD CONTACT TIP

# PARTS BREAKDOWN – 607 GW/PG



NO.	DESCRIPTION	607GW/PG
1	NOZZLE	SEE NOZZLE DETAIL SHEET PAGE 8
2	NOZZLE INSULATOR	SEE NOZZLE DETAIL SHEET PAGE 8
3	CONTACT TIP	SEE CONTACT TIP DETAIL SHEET PAGE 9
4	GAS DIFFUSER, STANDARD	75004033
	GAS DIFFUSER, SHORT	75004033S
	GAS DIFFUSER, LONG	75004033L
	GAS DIFFUSER, X-LONG	75004033XL
5	INSULATING WASHER	75001004
6	GOOSENECK, 60 DEGREE – GW SERIES	75006036
	GOOSENECK, 45 DEGREE – GW SERIES	75006035
	GOOSENECK, 180 DEGREE – PGRIP	75006051
	GOOSENECK, 22 DEGREE – PGRIP	75006052
	GOOSENECK, 45 DEGREE – PGRIP	75006053
7	GUN HANGER (OPTIONAL)	75000009
8	HANDLE ASSEMBLY – STD.	75000003
	HANDLE ASSEMBLY – PISTOL GRIP	75000003P
	HANDLE ASSEMBLY – EXT. TRIGGER	75000003-ET
	HANDLE TOP – STD.	75000006
	HANDLE TOP – DUAL SCHEDULE	75000006-SW
	HANDLE BOTTOM – STD.	75000007
	HANDLE BOTTOM – EXT. TRIGGER	75000007-ET
	HANDLE SCREWS – STD (4 REQUIRED)	75000008
	HANDLE SCREWS – PGRIP (6 REQUIRED)	75000008P
NS	SWITCH ASSEMBLY – DUAL SCHEDULE	75000017
NS	SWITCH ASSEMBLY – MULTI-SCHEDULE	75000018
NS	DS / MS SWITCH CONNECTORS	75077018
9	CABLE SUPPORT BOOT	75006033
10	10' POWER CABLE ASSEMBLY	75010607
	12' POWER CABLE ASSEMBLY	75012607
	15' POWER CABLE ASSEMBLY	75015607
	20' POWER CABLE ASSEMBLY	75020607
	25' POWER CABLE ASSEMBLY	75025607
NS	BULK OUTER CABLE COVER	32160999
11	2 PIECE ADAPTOR SUPPORT	75077012
NS	ADAPTOR SCREW	75077011
12	REAR SUPPORT SPRING	75006033S
13	DIR CON ADAPT BLK	75006148-DC
	EURO ADAPT BLOCK	75006148
14	MILLER DIR CON FEEDER PLUG	37577705
	OTC / DAIHEN DIR CON FEEDER PLUG	37577700
	OTC DP SERIES DIR CON FEEDER PLUG	37577701
	LINCOLN LN7 DIR CON FEEDER PLUG	37577832
	PANASONIC DIR CON FEEDER PLUG	37577999
	TWECO #4 DIR CON FEEDER PLUG	37577699
	TWECO #5 DIR CON FEEDER PLUG	37577930
	O-RING- MILLER PIN	37577102
	O-RING- TWECO #4 PIN	37677102
	O-RING- TWECO #5 PIN	75000021
	O-RING - EURO	28500002
	CONTROL CABLE, MILLER	37577201
	CONTROL CABLE, LINCOLN	37777200
	CONTROL CABLE, OTC	37777250
	CONTROL CABLE, TWECO	37677200
	GAS HOSE PER FOOT	38577087
	7/16 HOSE CLAMP	38577108
	INERT GAS NUT	38677141
	INERT GAS NIPPLE	38677142
15	CAP - MILLER FEEDER PIN	37577705-N
	CAP - OTC FEEDER PIN	38277001-N078
	CAP - EURO	37077005
16	EURO ADAPT HAND NUT	75077014

NO.	DESCRIPTION	607GW/PG
NS	7/16 HOSE CLAMP	38577108
NS	GAS HOSE (ORDER PER FOOT)	38577087
NS	TYPE B GAS NUT	38677145
NS	TYPE B GAS NIPPLE	38677144
NS	INERT GAS NUT	38677141
NS	INERT GAS NIPPLE	38677142
17	8.7mm HOSE CLAMP	38577105
18	WATER HOSE – RED (ORDER PER FOOT)	75099026
19	QUICK DISCONNECT – MALE	38660000
	QUICK DISCONNECT – FEMALE	38660001
20	WIRE / GAS CONDUIT (ORDER PER FOOT)	75099600
21	CONDUIT CLAMP	38577108
22	ANTI-STRETCH CORD (ORDER PER FOOT)	75099001
23	WATER – COOLED POWER CABLE – 10'	75006010
	WATER – COOLED POWER CABLE – 12'	75006012
	WATER – COOLED POWER CABLE – 15'	75006015
	WATER – COOLED POWER CABLE – 20'	75006001
	WATER – COOLED POWER CABLE – 25'	75006037
24	8.7mm HOSE CLAMP	38577105
25	WATER HOSE – BLUE (ORDER PER FOOT)	75099025
26	TRIGGER WIRE (ORDER PER FOOT)	75099770
27	TRIGGER WIRE CONNECTOR	75077024
28	BUTT SPLICE	75077066
29	TRIGGER SWITCH ASSY – STD.	75000004
	TRIGGER SWITCH ASSY – PISTOL GRIP	75000011P
30	EXTENDED TRIGGER	75000005E
31	TRIGGER SCREW	75000013
32	.023-.030 LINER, 10FT – T STYLE	75010215T
	.023-.030 LINER, 15FT – T STYLE	75015215T
	.035-.045 LINER, 10FT – T STYLE	75010222T
	.035-.045 LINER, 15FT – T STYLE	75015222T
	.035-.045 LINER, 25FT – T STYLE	75025222T
	.045-1/16 LINER, 10FT – T STYLE	75010228T
	.045-1/16 LINER, 15FT – T STYLE	75015228T
	.045-1/16 LINER, 25FT – T STYLE	75025228T
	5/64-3/32 LINER, 10FT – T STYLE	75010229T
	5/64-3/32 LINER, 15FT – T STYLE	75015229T
	5/64-3/32 LINER, 25FT – T STYLE	75025229T
NS	LINER ORING	75000001

NOTES:



# AMERICAN WELDQUIP

1375 Wolf Creek Trail – P.O. Box 397  
Sharon Center, Ohio 44274  
330-239-0317 Telephone / 800-949-9353 Fax



OM002 – 05/14