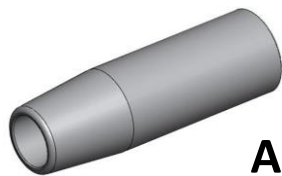


## NOZZLE/GAS DIFFUSER SELECTION CHART

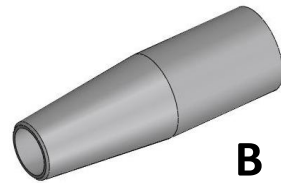
The Nozzle/Gas Diffuser chart is designed for easy identification and selection of a nozzle and gas diffuser with the desired configuration.

- 1) Select Amperage Torch/Nozzle Range or Model
- 2) Select desired nozzle bore size
- 3) Select desired tip placement
- 4) Select desired nozzle design. Note: there may be more than one type nozzle design configuration. Select the one that best fits your requirements. The chart below indicates the nozzle design which will match to the nozzle design specs.
- 5) Select proper gas diffuser. Note: there may be more than one type of diffuser design. Select your diffuser and please note the tip type that fits the diffuser.

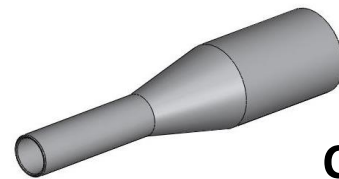
### NOZZLE DESIGN CONFIGURATIONS



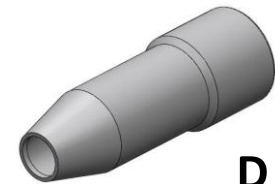
**A**



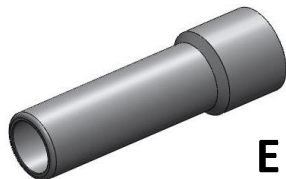
**B**



**C**



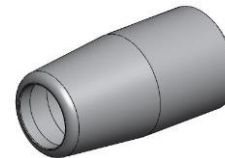
**D**



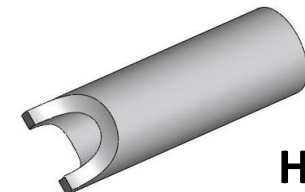
**E**



**F**



**G**

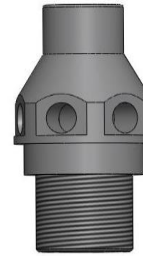


**H**

**GAS DIFFUSER DESIGN CONFIGURATIONS**



Diffuser Part Number	Overall Length	Tip Thread
75002007	1.220" (31.0mm)	M6
75002007L	1.340" (34.0mm)	M6
75002007S	1.160" (29.5mm)	M6
75002033A	1.195" (30.4mm)	M8
75004007	1.455" (37.0mm)	M6
75004033	1.438" (36.5mm)	M8
75004033F	1.438" (36.5mm)	M8
75004033L	1.530" (38.9mm)	M8
75004033S	1.275" (32.4mm)	M8
75004033XL	1.656" (42.1mm)	M8



Diffuser Part Number	Overall Length	Tip Thread
75002007V	1.00" (25.4mm)	M6



Diffuser Part Number	Overall Length	Tip Thread
75004033V	1.750" (44.5mm)	M6



Diffuser Part Number	Overall Length	Tip Thread
75004033A	1.031" (26.2mm)	M8

**300 AMP NOZZLES**

TIP PLACEMENT	PART #	DESCRIPTION	TYPE	MATERIAL	INSULATOR REQUIRED	O.A.L.	BORE SIZE	DIFFUSER	CONTACT TIP
<b>3/8" (9.5mm) BORE</b>									
<u>1/16" (1.5mm) RECESS</u>	75133802	NOZZLE - BOTTLE NOSE	C	NI PLATED BRASS	NONE REQ.	2.820" (71.6mm)	(3/8") (9.5mm)	75002007	Std Duty M6
<u>1/8" (3mm) RECESS</u>	75133802	NOZZLE - BOTTLE NOSE	C	NI PLATED BRASS	NONE REQ.	2.820" (71.6mm)	(3/8") (9.5mm)	75002007S 75002033A	Std Duty M6 Std Duty M8
<u>FLUSH</u>	75133802	NOZZLE - BOTTLE NOSE	C	NI PLATED BRASS	NONE REQ.	2.820" (71.6mm)	(3/8") (9.5mm)	75002007L	Std Duty M6
<u>1/16 (1.5mm) STICKOUT</u>	75133803	NOZZLE - EXTENDED REACH	C	NI PLATED BRASS	NONE REQ.	3.620" (91.94mm)	(3/8") (9.5mm)	75002007S	Requires 75035511X
<u>1/8" (3mm) STICKOUT</u>	75133803	NOZZLE - EXTENDED REACH	C	NI PLATED BRASS	NONE REQ.	3.620" (91.94mm)	(3/8") (9.5mm)	75002007	Requires 75035511X
<u>1/4" (6.3mm) STICKOUT</u>	75133803	NOZZLE - EXTENDED REACH	C	NI PLATED BRASS	NONE REQ.	3.620" (91.94mm)	(3/8") (9.5mm)	75002007L	Requires 75035511X

TIP PLACEMENT	PART #	DESCRIPTION	TYPE	MATERIAL	INSULATOR REQUIRED	O.A.L.	BORE SIZE	DIFFUSER	CONTACT TIP
<b>1/2" (12.7mm) BORE</b>									
<u>1/16" (1.5mm) RECESS</u>	75135002-I	NOZZLE - TAPERED	B	NI PLATED BRASS	INSTALLED	2.820" (71.6mm)	(1/2")(12.7mm)	75002007	Std Duty M6
<u>1/8" (3mm) RECESS</u>	75135002-I	NOZZLE - TAPERED	B	NI PLATED BRASS	INSTALLED	2.820" (71.6mm)	(1/2")(12.7mm)	75002007S 75002033A	Std Duty M6 Std Duty M8
<u>FLUSH</u>	75135002-I 75135003-I	NOZZLE - TAPERED NOZZLE - TAPERED	B C	NI PLATED BRASS NI PLATED BRASS	INSTALLED INSTALLED	2.820" (71.6mm) 2.662" (67.6mm)	(1/2")(12.7mm) (1/2")(12.7mm)	75002007L 75002007S	Std Duty M6 Std Duty M6
<u>1/16 (1.5mm) STICKOUT</u>	75135003-I	NOZZLE - TAPERED	C	NI PLATED BRASS	INSTALLED	2.662" (67.6mm)	(1/2")(12.7mm)	75002007 75002033A	Std Duty M6 Std Duty M8
<u>1/8" (3mm) STICKOUT</u>	75135003-I	NOZZLE - TAPERED	C	NI PLATED BRASS	INSTALLED	2.662" (67.6mm)	(1/2")(12.7mm)	75002007L	Std Duty M6
<u>1/4" (6.3mm) STICKOUT</u>	75135004	NOZZLE - SPECIAL SHORT Heavy Walled	G	NI PLATED BRASS	NONE REQ.	1.945" (49.2mm)	(1/2")(12.7mm)	75002007V	Std Duty M6
<b>19/32" (15.1mm) BORE</b>									
<u>1/16" (1.5mm) RECESS</u>	75135601-I	NOZZLE - CONICAL	A	NI PLATED BRASS	INSTALLED	2.820" (71.6mm)	(19/32")(15.1mm)	75002007	Std Duty M6
<u>1/8" (3mm) RECESS</u>	75135601-I	NOZZLE - CONICAL	A	NI PLATED BRASS	INSTALLED	2.820" (71.6mm)	(19/32")(15.1mm)	75002007S 75002033A	Std Duty M6 Std Duty M8
<u>FLUSH</u>	75135601-I	NOZZLE - CONICAL	A	NI PLATED BRASS	INSTALLED	2.820" (71.6mm)	(19/32")(15.1mm)	75002007L	Std Duty M6
<u>1/8" (3mm) STICKOUT</u>	75135602-I	NOZZLE - CONICAL	A	NI PLATED BRASS	INSTALLED	2.545" (64.6mm)	(19/32")(15.1mm)	75002007S 75002033A	Std Duty M6 Std Duty M8
<u>1/4" (6.3mm) STICKOUT</u>	75135602-I	NOZZLE - CONICAL	A	NI PLATED BRASS	INSTALLED	2.545" (64.6mm)	(19/32")(15.1mm)	75002007 75002007L	Std Duty M6 Std Duty M6

## 400 AMP NOZZLES

<b>7/16" (11.1mm) BORE</b>									
<u>1/16" (1.5mm) RECESS</u>	75144302-I	NOZZLE - TAPERED	D	NI PLATED BRASS	INSTALLED	3.125" (79.4mm)	(.438")(7/16")(11.1mm)	75004033 75004033F 75004007	Std Duty M8 Std Duty M8 Std Duty M6
<u>1/4" (6.3mm) RECESS</u>	75144302-I	NOZZLE - TAPERED	D	NI PLATED BRASS	INSTALLED	3.125" (79.4mm)	(.438")(7/16")(11.1mm)	75004033S	Std Duty M8
<u>FLUSH</u>	75144302-I	NOZZLE - TAPERED	D	NI PLATED BRASS	INSTALLED	3.125" (79.4mm)	(.438")(7/16")(11.1mm)	75004033L	Std Duty M8
<u>1/16 (1.5mm) STICKOUT</u>	75144301-I	NOZZLE - TAPERED	D	NI PLATED BRASS	INSTALLED	2.820" (71.6mm)	(.438")(7/16")(11.1mm)	75004033S	Std Duty M8
<u>1/8" (3mm) STICKOUT</u>	75144302-I	NOZZLE - TAPERED	D	NI PLATED BRASS	INSTALLED	3.125" (79.4mm)	(.438")(7/16")(11.1mm)	75004033XL	Std Duty M8
<u>1/4 STICKOUT</u>	75144301-I	NOZZLE - TAPERED	D	NI PLATED BRASS	INSTALLED	2.820" (71.6mm)	(.438")(7/16")(11.1mm)	75004033 75004033F 75004007	Std Duty M8 Std Duty M8 Std Duty M6

TIP PLACEMENT	PART #	DESCRIPTION	TYPE	MATERIAL	INSULATOR REQUIRED	O.A.L.	BORE SIZE	DIFFUSER	CONTACT TIP
<b>1/2" (12.7mm)BORE</b>									
<u>1/16" (1.5mm) RECESS</u>	75145004	NOZZLE - BOTTLE NOSE	C	NI PLATED BRASS	75001733	3.125" (79.4mm)	(.500")(1/2")(12.7mm)	75004033 75004033F 75004007	Std Duty M8 Std Duty M8 Std Duty M6
	75145003	NOZZLE - TAPERED (LONG)	B	NI PLATED BRASS	NONE REQ.	3.915" (99.4mm)	(.500")(1/2")(12.7mm)	75004033V	750xx211 Tip
<u>1/8" (3mm) RECESS</u>	75145001	NOZZLE - BOTTLE NOSE	C	NI PLATED BRASS	75001733	3.031" (77.0mm)	(.500")(1/2")(12.7mm)	75004033S	Std Duty M8
<u>1/4" (6.3mm) RECESS</u>	75145004	NOZZLE - BOTTLE NOSE	C	NI PLATED BRASS	75001733	3.125" (79.4mm)	(.500")(1/2")(12.7mm)	75004033S	Std Duty M8
<u>FLUSH</u>	75145001	NOZZLE - BOTTLE NOSE	C	NI PLATED BRASS	75001733	3.031" (77.0mm)	(.500")(1/2")(12.7mm)	75004033 75004033F 75004007	Std Duty M8 Std Duty M8 Std Duty M6
	75145004	NOZZLE - BOTTLE NOSE	C	NI PLATED BRASS	75001733	3.125" (79.4mm)	(.500")(1/2")(12.7mm)	75004033L	Std Duty M8
<u>1/16 (1.5mm) STICKOUT</u>	75145001	NOZZLE - BOTTLE NOSE	C	NI PLATED BRASS	75001733	3.031" (77.0mm)	(.500")(1/2")(12.7mm)	75004033L	Std Duty M8
	75145005	NOZZLE - BOTTLE NOSE	C	NI PLATED BRASS	75001733	2.820" (71.6mm)	(.500")(1/2")(12.7mm)	75004033S	Std Duty M8
<u>1/8" (3mm) STICKOUT</u>	75145004	NOZZLE - BOTTLE NOSE	C	NI PLATED BRASS	75001733	3.125" (79.4mm)	(.500")(1/2")(12.7mm)	75004033XL	Std Duty M8
<u>1/4" (6.3mm) STICKOUT</u>	75145001	NOZZLE - BOTTLE NOSE	C	NI PLATED BRASS	75001733	3.031" (77.0mm)	(.500")(1/2")(12.7mm)	75004033XL 75004033V 75004033 75004033F 75004007	Std Duty M8 Std Duty M6 Std Duty M8 Std Duty M8 Std Duty M6
	75145005	NOZZLE - BOTTLE NOSE	C	NI PLATED BRASS	75001733	2.820" (71.6mm)	(.500")(1/2")(12.7mm)		
<b>9/16" (14.3mm) BORE</b>									
<u>1/16" (1.5mm) RECESS</u>	75145601-I	NOZZLE - TAPERED	B	NI PLATED BRASS	INSTALLED	3.125" (79.4mm)	(.563")(9/16")(14.3mm)	75004033 75004033F 75004007	Std Duty M8 Std Duty M8 Std Duty M6
<u>1/4" (6.3mm) RECESS</u>	75145601-I	NOZZLE - TAPERED	B	NI PLATED BRASS	INSTALLED	3.125" (79.4mm)	(.563")(9/16")(14.3mm)	75004033S	Std Duty M8
	75145603-I	NOZZLE - SHORT TAPERED	G	NI PLATED BRASS	INSTALLED	2.375" (60.3mm)	(.563")(9/16")(14.3mm)	75004033A	Std Duty M8
<u>FLUSH</u>	75145601-I	NOZZLE - TAPERED	B	NI PLATED BRASS	INSTALLED	3.125" (79.4mm)	(.563")(9/16")(14.3mm)	75004033L	Std Duty M8
<u>1/8" (3mm) STICKOUT</u>	75145601-I	NOZZLE - TAPERED	B	NI PLATED BRASS	INSTALLED	3.125" (79.4mm)	(.563")(9/16")(14.3mm)	75004033XL	Std Duty M8
<u>1/4" (6.3mm) STICKOUT</u>	75145601-I	NOZZLE - TAPERED	B	NI PLATED BRASS	INSTALLED	3.125" (79.4mm)	(.563")(9/16")(14.3mm)	75004033V	Std Duty M6
	75145602-I	NOZZLE - SMALL CONICAL	D	NI PLATED BRASS	INSTALLED	2.820" (71.6mm)	(.593")(19/32")(15.1mm)	75004033 75004033F 75004007	Std Duty M8 Std Duty M8 Std Duty M6
<b>19/32" (15.1MM) BORE</b>									
<u>1/16 (1.5mm) STICKOUT</u>	75145602-I	NOZZLE - SMALL CONICAL	D	NI PLATED BRASS	INSTALLED	2.820" (71.6mm)	(.593")(19/32")(15.1mm)	75004033S	Std Duty M8
<u>1/4" (6.3mm) STICKOUT</u>	75145602-I	NOZZLE - SMALL CONICAL	D	NI PLATED BRASS	INSTALLED	2.820" (71.6mm)	(.593")(19/32")(15.1mm)	75004033 75004033F 75004007	Std Duty M8 Std Duty M8 Std Duty M6

TIP PLACEMENT	PART #	DESCRIPTION	TYPE	MATERIAL	INSULATOR REQUIRED	O.A.L.	BORE SIZE	DIFFUSER	CONTACT TIP
<b>5/8" (15.9mm) BORE</b>									
<u>1/16" (1.5mm) RECESS</u>	75146201-I	NOZZLE - BOTTLE NOSE	E	NI PLATED BRASS	INSTALLED	3.125" (79.4mm)	(.625") (5/8") (15.9mm)	75004033 75004033F 75004007	Std Duty M8 Std Duty M8 Std Duty M6
	75146202	NOZZLE - CONICAL	A	NI PLATED BRASS	75001738	3.125" (79.4mm)	(.625") (5/8") (15.9mm)	75004033 75004033F 75004007	Std Duty M8 Std Duty M8 Std Duty M6
	75146202C	NOZZLE - CONICAL	A	NI PLATED COPPER	75001738	3.125" (79.4mm)	(.625") (5/8") (15.9mm)	75004033 75004033F 75004007	Std Duty M8 Std Duty M8 Std Duty M6
	75146202CU	NOZZLE - CONICAL	A	BARE COPPER	75001738	3.125" (79.4mm)	(.625") (5/8") (15.9mm)	75004033 75004033F 75004007	Std Duty M8 Std Duty M8 Std Duty M6
<u>1/8" (3mm) RECESS</u>	75146205-I	NOZZLE - CONICAL	A	NI PLATED BRASS	INSTALLED	3.031" (77.0mm)	(.625") (5/8") (15.9mm)	75004033S	Std Duty M8
	75146205CU	NOZZLE - TAPERED	B	BARE COPPER	75001738	3.031" (77.0mm)	(.625") (5/8") (15.9mm)	75004033S	Std Duty M8
<u>1/4" (6.3mm) RECESS</u>	75146201-I	NOZZLE - BOTTLE NOSE	E	NI PLATED BRASS	INSTALLED	3.125" (79.4mm)	(.625") (5/8") (15.9mm)	75004033S	Std Duty M8
	75146202	NOZZLE - CONICAL	A	NI PLATED BRASS	75001738	3.125" (79.4mm)	(.625") (5/8") (15.9mm)	75004033S	Std Duty M8
	75146202C	NOZZLE - CONICAL	A	NI PLATED COPPER	75001738	3.125" (79.4mm)	(.625") (5/8") (15.9mm)	75004033S	Std Duty M8
	75146202CU	NOZZLE - CONICAL	A	BARE COPPER	75001738	3.125" (79.4mm)	(.625") (5/8") (15.9mm)	75004033S	Std Duty M8
<u>FLUSH</u>	75146201-I	NOZZLE - BOTTLE NOSE	E	NI PLATED BRASS	INSTALLED	3.125" (79.4mm)	(.625") (5/8") (15.9mm)	75004033L	Std Duty M8
	75146202	NOZZLE - CONICAL	A	NI PLATED BRASS	75001738	3.125" (79.4mm)	(.625") (5/8") (15.9mm)	75004033L	Std Duty M8
	75146205-I	NOZZLE - CONICAL	A	NI PLATED BRASS	INSTALLED	3.031" (77.0mm)	(.625") (5/8") (15.9mm)	75004033 75004033F 75004007	Std Duty M8 Std Duty M8 Std Duty M6
	75146202C	NOZZLE - CONICAL	A	NI PLATED COPPER	75001738	3.125" (79.4mm)	(.625") (5/8") (15.9mm)	75004033L	Std Duty M8
	75146202CU	NOZZLE - CONICAL	A	BARE COPPER	75001738	3.125" (79.4mm)	(.625") (5/8") (15.9mm)	75004033L	Std Duty M8
	75146205CU	NOZZLE - TAPERED	B	BARE COPPER	75001738	3.031" (77.0mm)	(.625") (5/8") (15.9mm)	75004033 75004033F 75004007	Std Duty M8 Std Duty M8 Std Duty M6
	75146207-I	NOZZLE - SHORT CONICAL	G	NI PLATED BRASS	INSTALLED	2.187" (55.6mm)	(.625") (5/8") (15.9mm)	75004033A	Std Duty M8
<u>1/16 (1.5mm) STICKOUT</u>	75146204-I	NOZZLE - CONICAL	A	NI PLATED BRASS	INSTALLED	2.820" (71.6mm)	(.625") (5/8") (15.9mm)	75004033S	Std Duty M8
	75146205-I	NOZZLE - CONICAL	A	NI PLATED BRASS	INSTALLED	3.031" (77.0mm)	(.625") (5/8") (15.9mm)	75004033L	Std Duty M8
	75146205CU	NOZZLE - TAPERED	B	BARE COPPER	75001738	3.031" (77.0mm)	(.625") (5/8") (15.9mm)	75004033L	Std Duty M8
<u>1/8" (3mm) STICKOUT</u>	75146201-I	NOZZLE - BOTTLE NOSE	E	NI PLATED BRASS	INSTALLED	3.125" (79.4mm)	(.625") (5/8") (15.9mm)	75004033XL	Std Duty M8
	75146202	NOZZLE - CONICAL	A	NI PLATED BRASS	75001738	3.125" (79.4mm)	(.625") (5/8") (15.9mm)	75004033XL	Std Duty M8
	75146202C	NOZZLE - CONICAL	A	NI PLATED COPPER	75001738	3.125" (79.4mm)	(.625") (5/8") (15.9mm)	75004033XL	Std Duty M8
	75146202CU	NOZZLE - CONICAL	A	BARE COPPER	75001738	3.125" (79.4mm)	(.625") (5/8") (15.9mm)	75004033XL	Std Duty M8
<u>1/4" (6.3mm) STICKOUT</u>	75146201-I	NOZZLE - BOTTLE NOSE	E	NI PLATED BRASS	INSTALLED	3.125" (79.4mm)	(.625") (5/8") (15.9mm)	75004033V	Std Duty M6
	75146202	NOZZLE - CONICAL	A	NI PLATED BRASS	75001738	3.125" (79.4mm)	(.625") (5/8") (15.9mm)	75004033V	Std Duty M6
	75146204-I	NOZZLE - CONICAL	A	NI PLATED BRASS	INSTALLED	2.820" (71.6mm)	(.625") (5/8") (15.9mm)	75004033 75004033F 75004007	Std Duty M8 Std Duty M8 Std Duty M6
	75146205-I	NOZZLE - CONICAL	A	NI PLATED BRASS	INSTALLED	3.031" (77.0mm)	(.625") (5/8") (15.9mm)	75004033XL	Std Duty M8
	75146206-I	NOZZLE - SHORT CONICAL	G	NI PLATED BRASS	INSTALLED	1.875" (47.6mm)	(.625") (5/8") (15.9mm)	75004033A	Std Duty M8
	75146202C	NOZZLE - CONICAL	A	NI PLATED COPPER	75001738	3.125" (79.4mm)	(.625") (5/8") (15.9mm)	75004033V	Std Duty M6
	75146202CU	NOZZLE - CONICAL	A	BARE COPPER	75001738	3.125" (79.4mm)	(.625") (5/8") (15.9mm)	75004033V	Std Duty M6
	75146205CU	NOZZLE - TAPERED	B	BARE COPPER	75001738	3.031" (77.0mm)	(.625") (5/8") (15.9mm)	75004033XL	Std Duty M8

TIP PLACEMENT	PART #	DESCRIPTION	TYPE	MATERIAL	INSULATOR REQUIRED	O.A.L.	BORE SIZE	DIFFUSER	CONTACT TIP
<b>3/4" (17.9mm) BORE</b>									
<u>1/16" (1.5mm) RECESS</u>	75147501CU	NOZZLE - CYLINDRICAL	F	BARE COPPER	75001738	3.125" (79.4mm)	(.703")(45/64")(17.9mm)	75004033 75004033F 75004007	Std Duty M8 Std Duty M8 Std Duty M6
<u>1/4" (6.3mm) RECESS</u>	75147501CU	NOZZLE - CYLINDRICAL	F	BARE COPPER	75001738	3.125" (79.4mm)	(.703")(45/64")(17.9mm)	75004033S	Std Duty M8
<u>FLUSH</u>	75147501CU	NOZZLE - CYLINDRICAL	F	BARE COPPER	75001738	3.125" (79.4mm)	(.703")(45/64")(17.9mm)	75004033L	Std Duty M8
<u>1/16" (1.5mm) STICKOUT</u>	75147502C	NOZZLE - CYLINDRICAL	F	NI PLATED COPPER	75001738	2.820" (71.6mm)	(.703")(45/64")(17.9mm)	75004033S	Std Duty M8
<u>1/8" (3mm) STICKOUT</u>	75147501CU	NOZZLE - CYLINDRICAL	F	BARE COPPER	75001738	3.125" (79.4mm)	(.703")(45/64")(17.9mm)	75004033XL	Std Duty M8
<u>1/4" (6.3mm) STICKOUT</u>	75147501CU 75147502C	NOZZLE - CYLINDRICAL NOZZLE - CYLINDRICAL	F F	BARE COPPER NI PLATED COPPER	75001738 75001738	3.125" (79.4mm) 2.820" (71.6mm)	(.703")(45/64")(17.9mm) (.703")(45/64")(17.9mm)	75004033V 75004033 75004033F 75004007	Std Duty M6 Std Duty M8 Std Duty M8 Std Duty M6

### SPOT NOZZLE

75146501S	NOZZLE - SPOT	H	NI PLATED BRASS	75001738	3.437" (87.3mm)	(.656")(21/32")(16.7mm)	.187 Recess .312 Recess	75004033XL 75004033L
-----------	---------------	---	-----------------	----------	-----------------	-------------------------	----------------------------	-------------------------

## 500 AMP NOZZLES

### 9/16" - 5/8" (15.1mm) BORE

<u>1/4" (6.3mm) STICKOUT</u>	75156201-I	NOZZLE - TAPERED	B	NI PLATED BRASS	INSTALLED	2.670" (67.8mm)	(.593")(19/32")(15.1mm)	75004033S	Std Duty M8
------------------------------	------------	------------------	---	-----------------	-----------	-----------------	-------------------------	-----------	-------------

### 3/4" (19.1mm) BORE

<u>1/4" (6.3mm) RECESS</u>	75157501	NOZZLE - CONICAL	A	NI PLATED BRASS	75001740	3.187 (81.0mm)	(.750")(3/4")(19.1mm)	75004033S	Std Duty M8
<u>1/8" (3mm) RECESS</u>	75157501	NOZZLE - CONICAL	A	NI PLATED BRASS	75001740	3.187 (81.0mm)	(.750")(3/4")(19.1mm)	75004033 75004033F	Std Duty M8 Std Duty M8
<u>FLUSH</u>	75157501	NOZZLE - CONICAL	A	NI PLATED BRASS	75001740	3.187 (81.0mm)	(.750")(3/4")(19.1mm)	75004033L	Std Duty M8
<u>1/8" (3mm) STICKOUT</u>	75157501	NOZZLE - CONICAL	A	NI PLATED BRASS	75001740	3.187 (81.0mm)	(.750")(3/4")(19.1mm)	75004033XL	Std Duty M8

## WATER-COOLED NOZZLES

### 5/8" (15.9mm) BORE

<u>1/16" (1.5mm) RECESS</u>	75166201	NOZZLE - CONICAL, THREAD ON (HOSE BARBS)	A	BARE COPPER	75001738	3.125" (79.4mm)	(.625")(5/8")(15.9mm)	75004033 75004033F 75004007	Std Duty M8 Std Duty M8 Std Duty M6
-----------------------------	----------	--	---	-------------	----------	-----------------	-----------------------	-----------------------------------	---

TIP PLACEMENT	PART #	DESCRIPTION	TYPE	MATERIAL	INSULATOR REQUIRED	O.A.L.	BORE SIZE	DIFFUSER	CONTACT TIP
	75166202M	NOZZLE - CONICAL, THREAD ON (Quick Disconn	A	BARE COPPER	75001738	3.125" (79.4mm)	(.625")(5/8")(15.9mm)	75004033 75004033F 75004007	Std Duty M8 Std Duty M8 Std Duty M6
	75166204M	NOZZLE - CONICAL, SWIVEL CONNECTION (HOSE	A	BARE COPPER	75001738	3.125" (79.4mm)	(.625")(5/8")(15.9mm)	75004033 75004033F 75004007	Std Duty M8 Std Duty M8 Std Duty M6
	75166203	NOZZLE - CONICAL, SWIVEL CONNECTION (Quicl	A	BARE COPPER	75001738	3.125" (79.4mm)	(.625")(5/8")(15.9mm)	75004033 75004033F 75004007	Std Duty M8 Std Duty M8 Std Duty M6
<u>1/4" (6.3mm) RECESS</u>	75166201	NOZZLE - CONICAL, THREAD ON (HOSE BARBS)	A	BARE COPPER	75001738	3.125" (79.4mm)	(.625")(5/8")(15.9mm)	75004033S	Std Duty M8
	75166202M	NOZZLE - CONICAL, THREAD ON (Quick Disconn	A	BARE COPPER	75001738	3.125" (79.4mm)	(.625")(5/8")(15.9mm)	75004033S	Std Duty M8
	75166204M	NOZZLE - CONICAL, SWIVEL CONNECTION (HOSE	A	BARE COPPER	75001738	3.125" (79.4mm)	(.625")(5/8")(15.9mm)	75004033S	Std Duty M8
	75166203	NOZZLE - CONICAL, SWIVEL CONNECTION (Quicl	A	BARE COPPER	75001738	3.125" (79.4mm)	(.625")(5/8")(15.9mm)	75004033S	Std Duty M8
<u>FLUSH</u>	75166201	NOZZLE - CONICAL, THREAD ON (HOSE BARBS)	A	BARE COPPER	75001738	3.125" (79.4mm)	(.625")(5/8")(15.9mm)	75004033L	Std Duty M8
	75166202M	NOZZLE - CONICAL, THREAD ON (Quick Disconn	A	BARE COPPER	75001738	3.125" (79.4mm)	(.625")(5/8")(15.9mm)	75004033L	Std Duty M8
	75166204M	NOZZLE - CONICAL, SWIVEL CONNECTION (HOSE	A	BARE COPPER	75001738	3.125" (79.4mm)	(.625")(5/8")(15.9mm)	75004033L	Std Duty M8
	75166203	NOZZLE - CONICAL, SWIVEL CONNECTION (Quicl	A	BARE COPPER	75001738	3.125" (79.4mm)	(.625")(5/8")(15.9mm)	75004033L	Std Duty M8
<u>1/8" (3mm) STICKOUT</u>	75166201	NOZZLE - CONICAL, THREAD ON (HOSE BARBS)	A	BARE COPPER	75001738	3.125" (79.4mm)	(.625")(5/8")(15.9mm)	75004033XL	Std Duty M8
	75166202M	NOZZLE - CONICAL, THREAD ON (Quick Disconn	A	BARE COPPER	75001738	3.125" (79.4mm)	(.625")(5/8")(15.9mm)	75004033XL	Std Duty M8
	75166204M	NOZZLE - CONICAL, SWIVEL CONNECTION (HOSE	A	BARE COPPER	75001738	3.125" (79.4mm)	(.625")(5/8")(15.9mm)	75004033XL	Std Duty M8
	75166203	NOZZLE - CONICAL, SWIVEL CONNECTION (Quicl	A	BARE COPPER	75001738	3.125" (79.4mm)	(.625")(5/8")(15.9mm)	75004033XL	Std Duty M8
<u>1/4" (6.3mm) STICKOUT</u>	75166201	NOZZLE - CONICAL, THREAD ON (HOSE BARBS)	A	BARE COPPER	75001738	3.125" (79.4mm)	(.625")(5/8")(15.9mm)	75004033V	Std Duty M6
	75166202M	NOZZLE - CONICAL, THREAD ON (Quick Disconn	A	BARE COPPER	75001738	3.125" (79.4mm)	(.625")(5/8")(15.9mm)	75004033V	Std Duty M6
	75166204M	NOZZLE - CONICAL, SWIVEL CONNECTION (HOSE	A	BARE COPPER	75001738	3.125" (79.4mm)	(.625")(5/8")(15.9mm)	75004033V	Std Duty M6
	75166203	NOZZLE - CONICAL, SWIVEL CONNECTION (Quicl	A	BARE COPPER	75001738	3.125" (79.4mm)	(.625")(5/8")(15.9mm)	75004033V	Std Duty M6
<b>3/4" (19.1mm) BORE</b>									
<u>1/4" (6.3mm) RECESS</u>	75167502M	NOZZLE - CONICAL, SWIVEL CONNECTION (HOSE	A	BARE COPPER	75001740	3.125" (79.4mm)	(.750")(3/4")(19.1mm)	75004033S	Std Duty M8
<u>1/16" (1.5mm) RECESS</u>	75167502M	NOZZLE - CONICAL, SWIVEL CONNECTION (HOSE	A	BARE COPPER	75001740	3.125" (79.4mm)	(.750")(3/4")(19.1mm)	75004033 75004033F 75004007	Std Duty M8 Std Duty M8 Std Duty M6
<u>FLUSH</u>	75167502M	NOZZLE - CONICAL, SWIVEL CONNECTION (HOSE	A	BARE COPPER	75001740	3.125" (79.4mm)	(.750")(3/4")(19.1mm)	75004033L	Std Duty M8
<u>1/8" (3mm) STICKOUT</u>	75167502M	NOZZLE - CONICAL, SWIVEL CONNECTION (HOSE	A	BARE COPPER	75001740	3.125" (79.4mm)	(.750")(3/4")(19.1mm)	75004033XL	Std Duty M8
<u>1/4" (6.3mm) STICKOUT</u>	75167502M	NOZZLE - CONICAL, SWIVEL CONNECTION (HOSE	A	BARE COPPER	75001740	3.125" (79.4mm)	(.750")(3/4")(19.1mm)	75004033V	Std Duty M6