

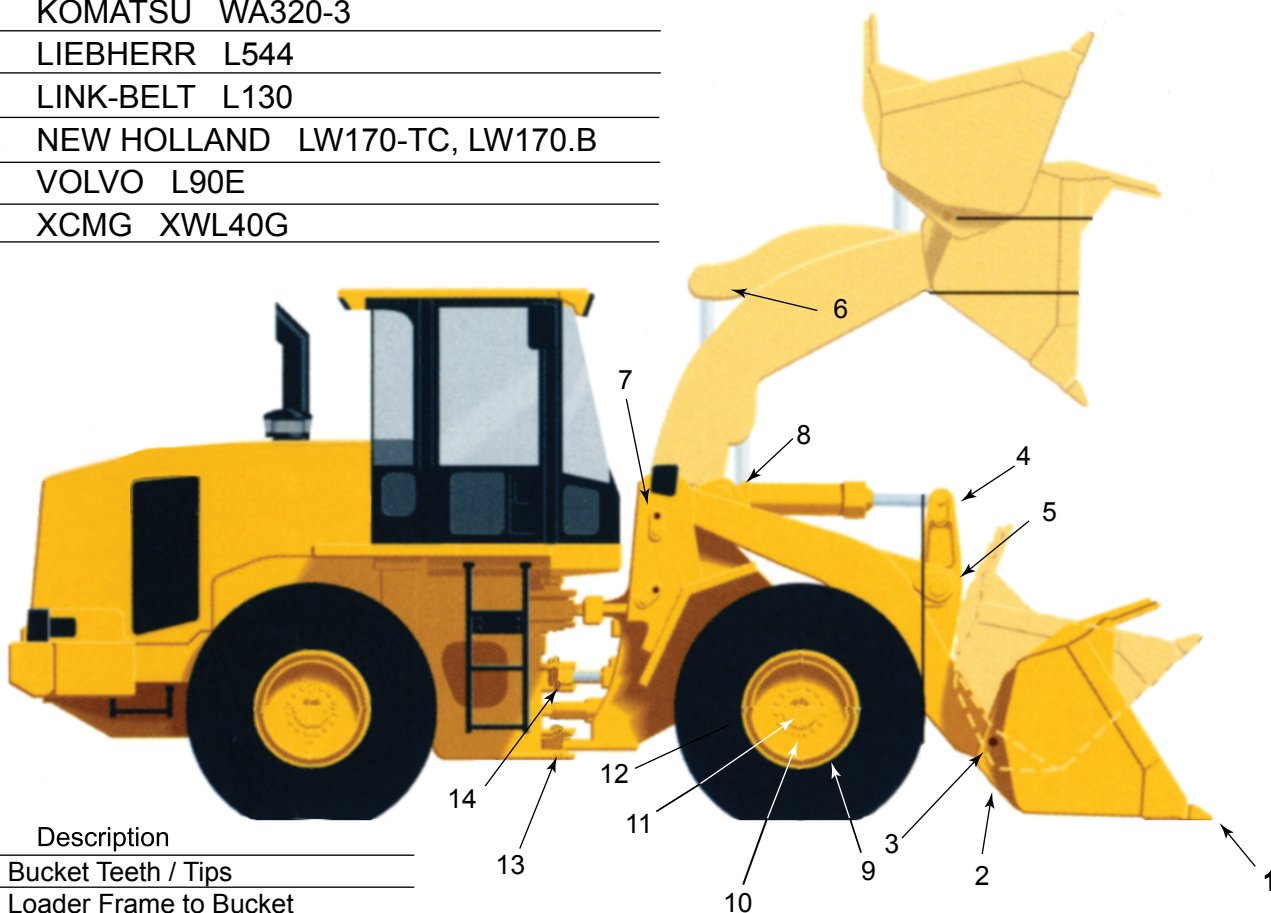
MACHINE MODELS

| |
|-------------------------------|
| CASE 721D |
| CAT 938G |
| DAEWOO MEGA 250-III Plus |
| DEERE 644H, 644J |
| HYUNDAI HL757-7, HL757XTD-7 |
| INTENUS WL40G |
| JCB 436 HT, 436 ZX |
| KAWASAKI 70ZV |
| KOMATSU WA320-3 |
| LIEBHERR L544 |
| LINK-BELT L130 |
| NEW HOLLAND LW170-TC, LW170.B |
| VOLVO L90E |
| XCMG XWL40G |

SAFETY FIRST

1. Wear Safety Equipment.
2. Keep hands and feet clear.
3. Beware of flying objects.

Prior to removing any pins or parts refer to Manufacturers Service manual for proper procedures for securing and stabilizing equipment.



| Item | Description |
|------|-------------------------------------|
| 1 | Bucket Teeth / Tips |
| 2 | Loader Frame to Bucket |
| 3 | Tilt Link to Bucket Pin |
| 4 | Rod End Tilt Cylinder |
| 5 | Tilt Link to Loader Frame |
| 6 | Lift Cylinder Pin |
| 7 | Loader Frame to Main Frame Pin |
| 8 | Tilt Cylinder Pin |
| 9 | Tire Bead |
| 10 | Wheel Stud Remover |
| 11 | Race Wheel Bearings |
| 12 | Steering Cylinder to Frame Assembly |
| 13 | Articulation Pin |
| 14 | Steering Pin to Frame |

See back for Pin Removal / Insertion specifications and recommended Slide Sledge® tool kit.

The following removal and insertion tips are manufacturer recommendations for this model. Other model wheel loaders may use similar tips and tools for similar removals. Consult with manufacturer for specific models and uses.

| Item | Tool/Tip | Description | Part# |
|------|-----------|-----------------------------------|--------|
| #1 | R/I Tool | 14 lb./30" Slide Sledge | 211301 |
| | R/I Tip | 1/2" Ripper Tooth Pin Remover | 213304 |
| | R/I Tip | 1/2" Ripper Tooth Pin Inserter | 213303 |
| #2 | R/I Tool | 13lb./46" Slide Sledge | 211203 |
| | R/I Tip | 1 1/4" Pin Driver | 213103 |
| #3 | R/I Tool | 13lb./46" Slide Sledge | 211203 |
| | R/I Tip | 2" Pin Driver | 213104 |
| #4 | R/I Tool | 13lb./46" Slide Sledge | 211203 |
| | R/I Tip | 2" Pin Driver | 213104 |
| #5 | R/I Tool | 13lb./46" Slide Sledge | 211203 |
| | R/I Tip | 2" Pin Driver | 213104 |
| #6 | R/I Tool | 13lb./46" Slide Sledge | 211203 |
| | R/I Tip | 2" Pin Driver | 213104 |
| #7 | R/I Tool | 13lb./46" Slide Sledge | 211203 |
| | R/I Tip | 2" Pin Driver | 213104 |
| #8 | R/I Tool | 13lb./46" Slide Sledge | 211203 |
| | R/I Tip | 2" Pin Driver | 213104 |
| #9 | R/I Tool | 21lb./46" Slide Sledge | 211401 |
| | R/I Tip | Small Tire Bead Breaker | 25350 |
| | Accessory | 5 lb. Handle Weight | 211808 |
| #10 | R/I Tool | 14 lb./30" Slide Sledge | 211301 |
| | R/I Tip | 2" Pin Driver | 213104 |
| #11 | R/I Tool | 9lb./30" Slide Sledge | 211103 |
| | R/I Tip | Bushing/Bearing/Seal Plate Driver | 213525 |
| #12 | R/I Tool | 14 lb./30" Slide Sledge | 211301 |
| | R/I Tip | 1 1/4" Pin Driver | 213103 |
| #13 | R/I Tool | 14 lb./30" Slide Sledge | 211301 |
| | R/I Tip | 1 1/4" Pin Driver | 213103 |
| #14 | R/I Tool | 14 lb./30" Slide Sledge | 211301 |
| | R/I Tip | 1 1/4" Pin Driver | 213103 |

Recommended Tool Kit for Midsize Wheel Loaders

| Product | Part# |
|-----------------------------------|--------|
| 9lb./30" Slide Sledge | 211103 |
| 13 lb./46" Slide Sledge | 211203 |
| 14lb./30" Slide Sledge | 211301 |
| 21lb./46" Slide Sledge | 211401 |
| 1 1/4" Pin Driver | 213103 |
| 2" Pin Driver | 213104 |
| 1/2" Bucket Tooth Remover | 213304 |
| 1/2" Bucket Tooth Inserter | 213303 |
| Small Tire Bead Breaker | 213529 |
| Bushing/Bearing/Seal Plate Driver | 213525 |
| 5 lb. Handle Weight | 211808 |

Removal and installation should only be performed on pins that have been properly serviced and maintained.